

# OS1000

## Corneal Topography and Dry Eye Assessment

An integrated diagnostic platform that combines a corneal topographer with dry eye assessment, giving eye care professionals the ability to perform complete dry eye and topography tests with one device.

### BENEFITS OF USING OS1000:

- Minimize capital expense with two functions in one device including corneal topography and dry eye assessment.
- Grow your ocular surface line of service with the integrated dry eye module.
- Improve workflow efficiencies with fast acquisitions as well as automatic and customizable treatment protocols.

# Software

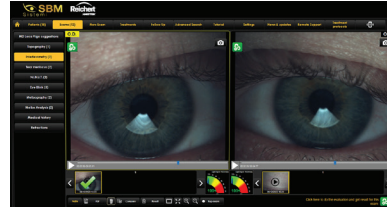
## Instrument Control Platform (ICP)

Each of the innovative devices use ICP, an intuitive software application, that easily performs and analyzes ocular surface tests. The software allows you to save, print, and share test reports with your patients, as well as create your own treatment protocol or use existing protocol. Minimize the analysis time for each patient with ICP's customizable test wizard which guides you through all the necessary tests.

### ADDITIONAL EXAMS AVAILABLE:

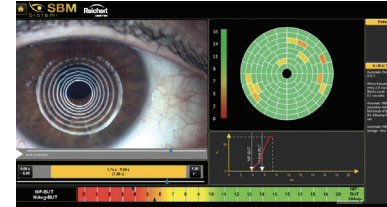
- Eye Blink detection and quality analysis
- 3D Meibography
- Blepharitis
- Bulbar Redness
- Efron/CCLRU/Jenvis
- Demodex
- Pupillometry\*

\*Not available with DEM100-DSL200



### INTERFEROMETRY

Calculate lipid layer thickness and evaluate for abnormal lipid production, evaporative dry eye, and MGD.



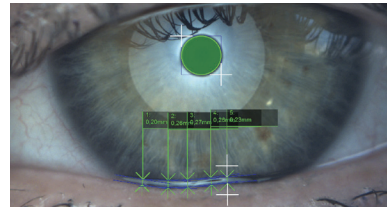
### AUTO-NIBUT

Evaluate tear film stability using non-invasive break time measurement with a single video acquisition.



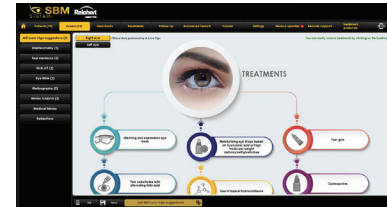
### MEIBOGRAPHY

Assess the structure and drop rate of the meibomian glands of both upper and lower lids.



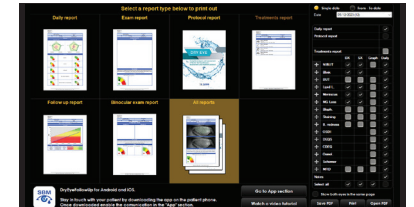
### TEAR MINISCUS

Analyze the Aqueous layer of the tear film through the non-invasive "Tear Meniscus" test, assessing height, regularity and shape of the meniscus.



### PROTOCOL

Algorithm based treatment suggestions that is also customizable.



### REPORTS

Multiple dry eye reports available to view, print, share with patients, and send to EMR as PDF.

SUMMARY OF TOPOGRAPHY AND  
DRY EYE INSTRUMENTS

FEATURE COMPARISON FOR OS1000 MODELS			
FEATURE	OS1000 BASIC	OS1000 PLUS	OS1000 FULL
Price:	\$13,799.00	\$ 17,399.00	\$ 25,799.00
Anterior Segment Imaging			
Axial Map	X	X	X
Tangential map	X	X	X
Refraction map	X	X	X
Gaussian map	X	X	X
Elevation map	X	X	X
Differential map	X	X	X
Comparison map	X	X	X
Keratoconus screening	X	X	X
C/L fitting simulation		X	X
Pupillometry		X	X
White to White measure		X	X
Interferometry		Manual	Auto
NIBUT		X	X
Meibography		X	X
Tear meniscus		Manual	X
Wizard Procedure		X	X
Treatment Protocol section		X	X
Smartphone app: "Dry Eye"		X	X
Blink quality		X	Auto
Blepharitis		X	Auto
Ocular Redness Classificat		X	X
Fluorescein Staining			
Lissamine Staining			
Demodex documentation			
Dry Eye questionnaire			
Compare w/ Inter. Scales			