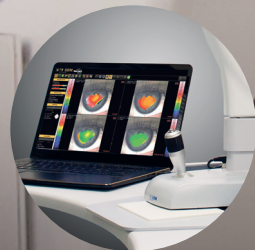
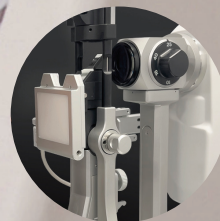


Reichert
AMETEK

**OS1000**

Reichert | **SBM**
AMETEK | Sistemi



Dry Eye and Ocular Surface

FROM EFFORTLESS EVALUATION TO SOOTHING THERAPY



Introducing

the most comprehensive family of **Dry Eye Assessment and Therapy Devices**, from Reichert®/SBM Sistemi, featuring innovative technologies that evaluate the ocular surface and dry eye disease quickly and non-invasively by providing objective and reproducible results.

WHY INVEST IN OCULAR SURFACE ASSESSMENT TECHNOLOGY?

- Dry Eye Disease (DED) is becoming more prevalent in the United States with an estimated 16 million Americans having been diagnosed with DED,¹ but some reports indicate nearly half of all U.S. adults experience dry eye signs and symptoms.²
- 33% of patients in eye care clinics present complaints of dry eye symptoms,¹ impacting the quality of their day-to-day lives.
- Traditional methods of assessing DED can be time consuming, difficult to administer, uncomfortable for patients, and often provide subjective results which can lead to misdiagnosis.

Choosing from Reichert's comprehensive and flexible family of advanced dry eye assessment and therapy devices will enable your practice to increase operational efficiency, identify more DED, and enhance patient care.



DEM100-DSL200

Anterior Segment Imaging with Dry Eye Assessment

Digitize your slit lamp with a high-resolution anterior imaging camera system that is compatible with a wide range of slit lamps. When integrated with the dry eye module, convert your slit lamp into a dry eye station without the need for additional space.

BENEFITS OF USING DEM100-DSL200:

- Compatible with a wide range of slit lamp makes and models.
- Digitize your slit lamp cost effectively.
- Save space and time by adding dry eye diagnostics to your slit lamp.
- Provide patients the complete eye care they need by easily adding dry eye assessment to your routine exams.

