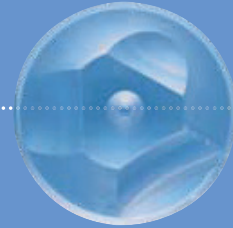
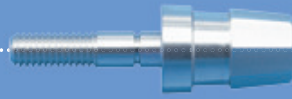
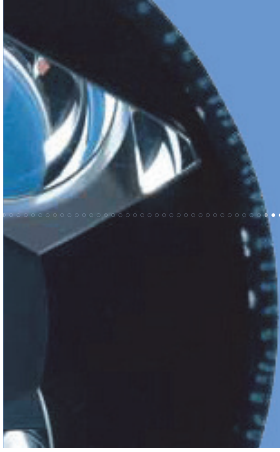


## Imaging capabilities – progressive functionality



The BP 900 offers 10x, 16x and 25x magnifications and imaging capabilities. Designed for routine practice, the BP 900 has a redesigned optical system and progressive functionality. Two optional beam splitters, one for video, one for digital photography, are available and allow the attachment of consumer-market digital cameras.





## Slit Lamp BP 900®

### BEAM SPLITTER



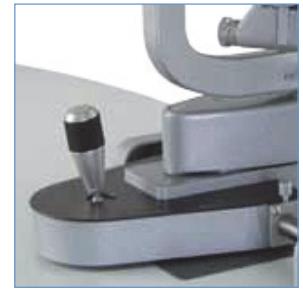
There are two optional beam splitters – one for video and one for digital consumer. Each accepts commercially available consumer-level devices. Seventy per cent of the reflected light from the image is directed to the camera or video.

### CAMERA MODULE CM 900

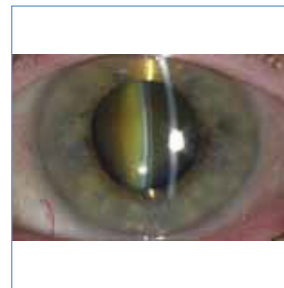


Specifically developed for ophthalmic slit lamp imaging. The professional sensor provides the user with high sensitivity and wide dynamic range, ideal for imaging under lower light conditions and easier to image dark eyes.

### INSTRUMENT BASE



The BP 900 LED is delivered with the BQ 900 cross slide, bringing significant improvement to imaging application and functionality. The same release module as on the BQ 900 LED means simple and ergonomic management of the camera settings, right/left detection, weight compensation and improved durability due to full-metal mechanics.



The quality of the optical system is the determining factor for the results of whatever slit lamp application you are using. HAAG-STREIT therefore uses only the best materials and latest production processes to manufacture the lenses for all slit lamps at our own premises.